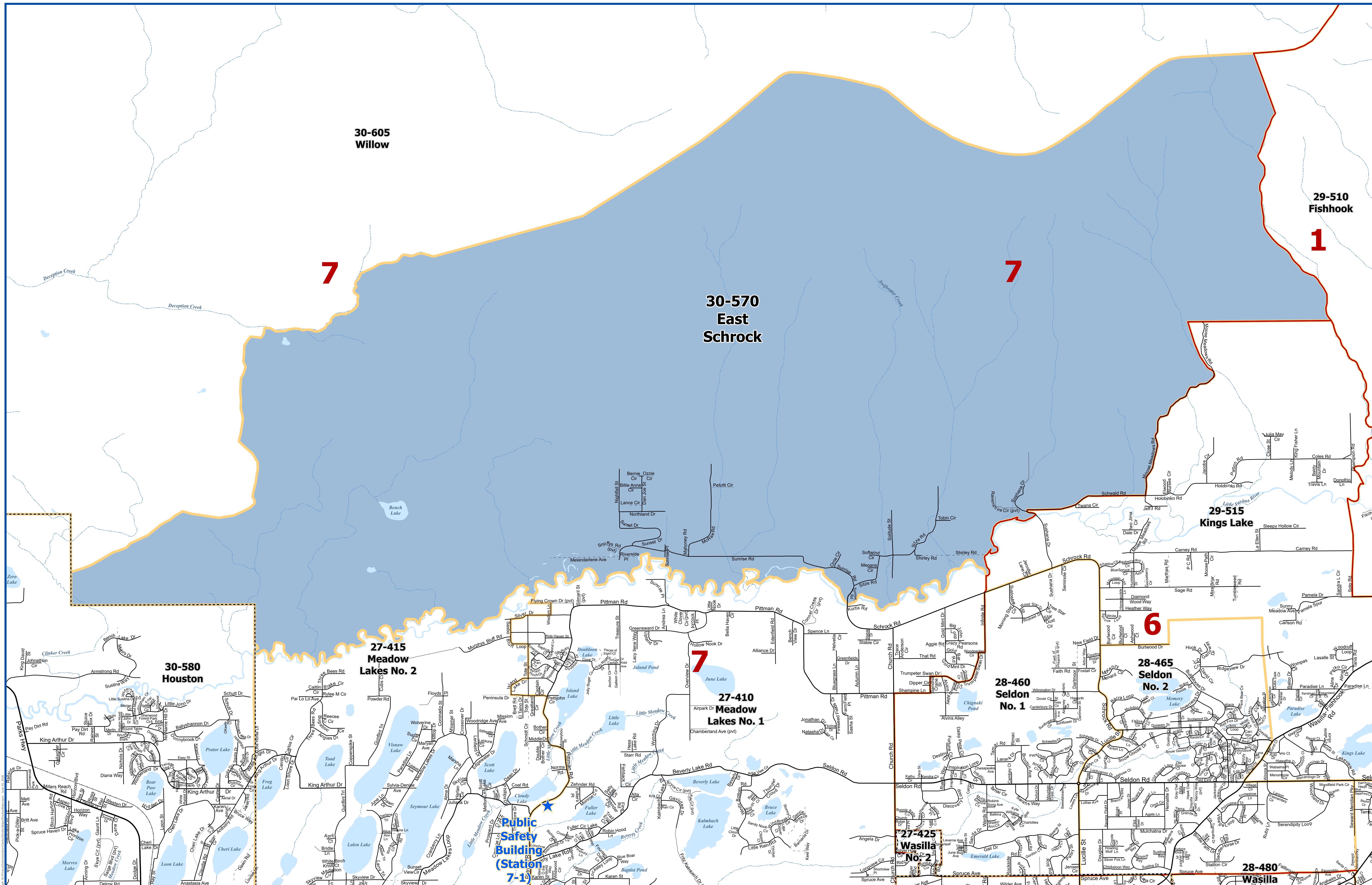
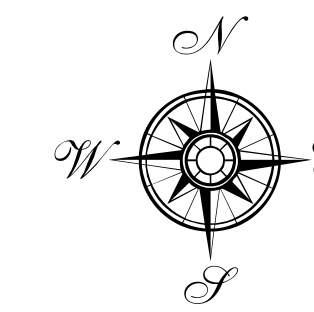




# Matanuska-Susitna Borough Voting Precincts



- Polling Location
- City Boundaries
- Voting Precincts
- Assembly District Boundaries
- Matanuska Susitna Borough Boundary
- Roads
  - Highway
  - Major
  - Medium
  - Minor
  - Private
  - Primitive
  - Not Constructed
- Railroad
- Major Waterbodies
- Streams

Precinct # 30-570 East Schrock  
 Poll Location:  
**PUBLIC SAFETY BUILDING (Station 7-1)**  
 1685 N. Pittman Road

Prepared by MSB  
 IT Department - GIS Division  
 Data Sources: Matanuska-Susitna Borough,  
 State of Alaska Division of Elections

June 2026

